

# Isochem Package



## For Chevrolet City Express



Pest Control



Chemical  
Transport

### IsoChem

IsoChem isolates the cargo area 100% from the passenger cabin to prevent transfer of fumes, vapors and smells. Thermal cycle tests have been done with chlorides in an independent lab (Intertek) at  $-4^{\circ}\text{F}$ ,  $32^{\circ}\text{F}$  and  $122^{\circ}\text{F}$ .



*\*FMVSS 201U compliant*

### Standard Equipment

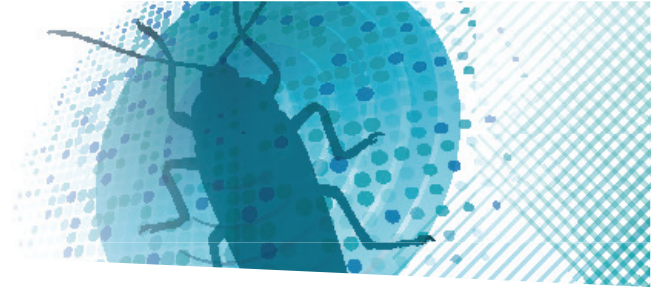
- Modular ABS panels
- Aluminum anti-slip floor protection
- Full doors
- Integrated floor drain

### Product Features

- Modular kit assembly for high volume upfits
- Isolated cargo space eliminates odors and vapors from entering occupant compartment
- Composite panels are leak-free and easy to clean
- Available through our regional partners

### IsoChem Van Specifications

Van Make	Van Model	Wheelbase	Roof Height	IsoChem Kit Available	Cargo Area Volume	Inner Length	Inner Width	Inner Height	Kit Weight
Chevrolet	City Express	115 in.	Standard	Yes	110 cu. ft.	69.6 in.	53.1 in.	51.4 in.	185 lb.



Gruau is a French, 5th generation family-owned company that has been in business for over 128 years, specializing in the conversions of light commercial vehicles. With over 1,600 employees and 50,000 conversions per year for customers and OEMs around the world, Gruau is Europe's leading body builder. Its 18 commercial and industrial facilities offer unique design, commercial and industrial capacity.



Gruau is expanding its network in the US with long term quality partners that have been trained both technically and commercially.

## Please contact us for more information

Michel MENIL – CEO

✉ [michel.menil@gruau.com](mailto:michel.menil@gruau.com)